



NDUFA3 Polyclonal Antibody

Catalog No	YP-Ab-02697
Isotype	IgG
Reactivity	Human;Mouse
Applications	IHC;IF;ELISA
Gene Name	NDUFA3
Protein Name	NADH dehydrogenase [ubiquinone] 1 alpha subcomplex subunit 3
Immunogen	The antiserum was produced against synthesized peptide derived from human NDUFA3. AA range:34-83
Specificity	NDUFA3 Polyclonal Antibody detects endogenous levels of NDUFA3 protein.
Formulation	Liquid in PBS containing 50% glycerol, 0.5% BSA and 0.02% sodium azide.
Source	Polyclonal, Rabbit,IgG
Purification	The antibody was affinity-purified from rabbit antiserum by affinity-chromatography using epitope-specific immunogen.
Dilution	IHC: 1/100 - 1/300. ELISA: 1/40000.. IF 1:50-200
Concentration	1 mg/ml
Purity	≥90%
Storage Stability	-20°C/1 year
Synonyms	NDUFA3; NADH dehydrogenase [ubiquinone] 1 alpha subcomplex subunit 3; Complex I-B9; CI-B9; NADH-ubiquinone oxidoreductase B9 subunit
Observed Band	
Cell Pathway	Mitochondrion inner membrane ; Single-pass membrane protein .
Tissue Specificity	Cerebellum,Pancreas,Prostate,Umbilical cord blood,
Function	function:Accessory subunit of the mitochondrial membrane respiratory chain NADH dehydrogenase (Complex I), that is believed to be not involved in catalysis. Complex I functions in the transfer of electrons from NADH to the respiratory chain. The immediate electron acceptor for the enzyme is believed to be ubiquinone.,similarity:Belongs to the complex I NDUFA3 subunit family.,subunit:Complex I is composed of 45 different subunits.,
Background	function:Accessory subunit of the mitochondrial membrane respiratory chain NADH dehydrogenase (Complex I), that is believed to be not involved in catalysis. Complex I functions in the transfer of electrons from NADH to the respiratory chain. The immediate electron acceptor for the enzyme is believed to be ubiquinone.,similarity:Belongs to the complex I NDUFA3 subunit family.,subunit:Complex I is composed of 45 different subunits.,

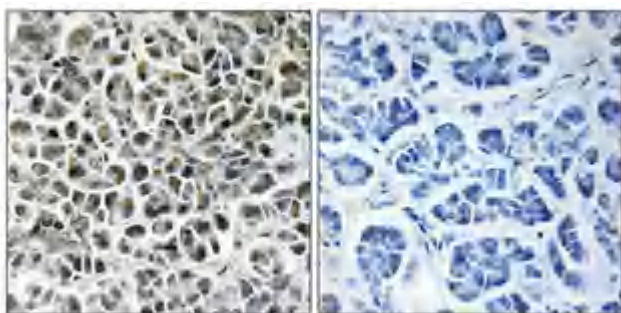
**matters needing attention**

Avoid repeated freezing and thawing!

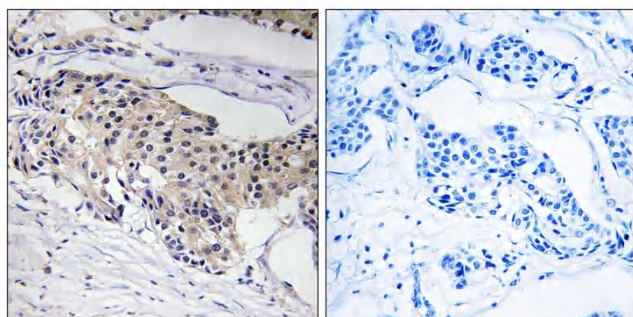
Usage suggestions

This product can be used in immunological reaction related experiments. For more information, please consult technical personnel.

Products Images



Immunohistochemical analysis of paraffin-embedded Human pancreas. Antibody was diluted at 1:100(4° overnight). High-pressure and temperature Tris-EDTA,pH8.0 was used for antigen retrieval. Negative contrl (right) obtained from antibody was pre-absorbed by immunogen peptide.



Immunohistochemistry analysis of paraffin-embedded human breast carcinoma tissue, using NDUFA3 Antibody. The picture on the right is blocked with the synthesized peptide.